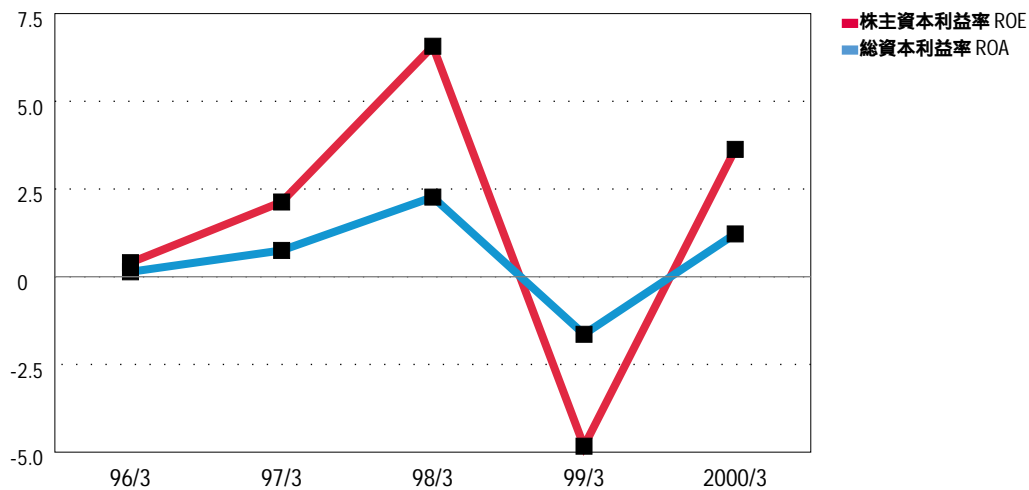


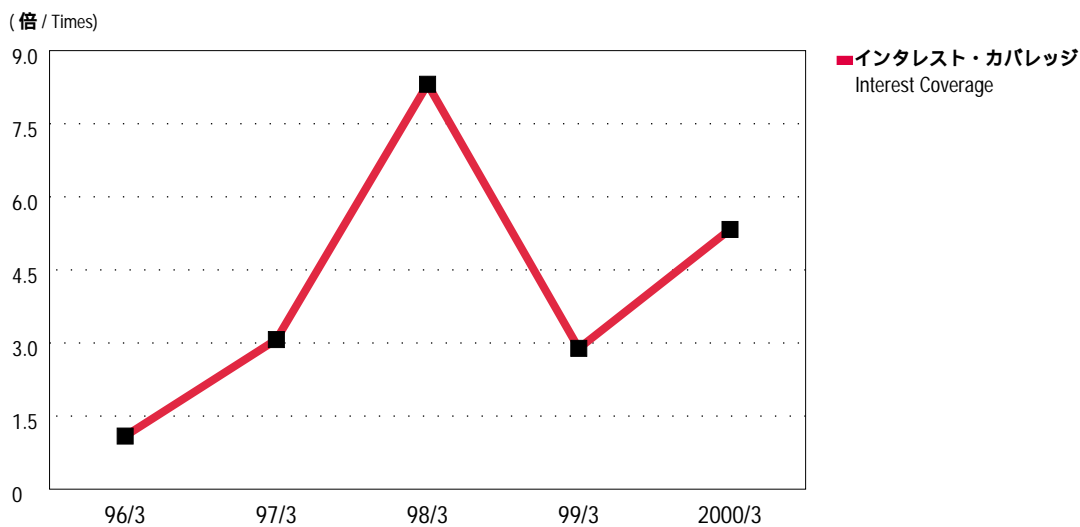
## 7) その他の指標 Other Indicators

	96/3	97/3	98/3	99/3	2000/3
株主資本利益率 ROE (%)	0.40	2.13	6.57	-4.83	3.63
総資本利益率* ROA (%)	0.14	0.75	2.27	-1.64	1.22

\*ROA =  $\frac{\text{Net Income}}{\text{Average of Total Assets at Beginning and End of the Fiscal Year}}$   
(%)

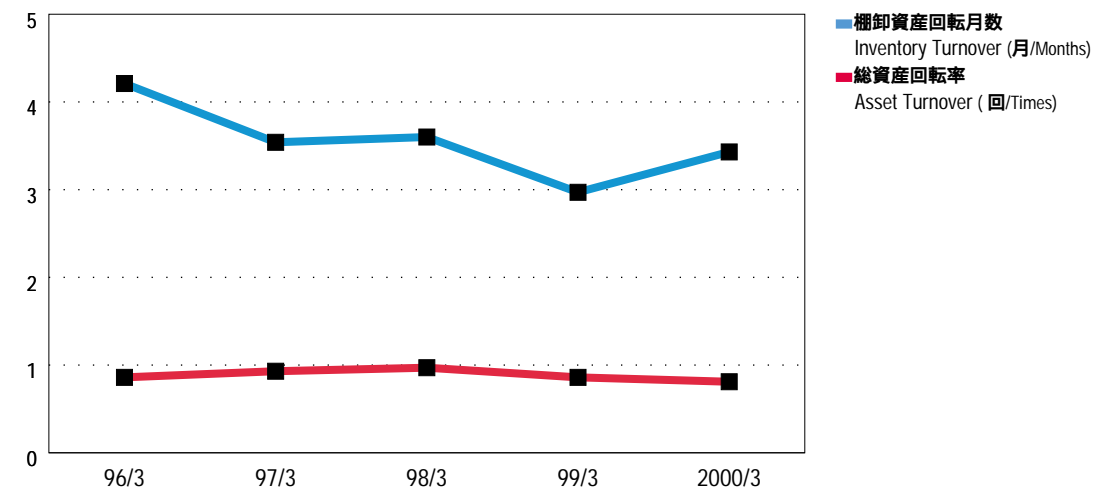


(百万円 / ¥ million)	96/3	97/3	98/3	99/3	2000/3
営業利益 Operating Income	4,145	14,370	37,757	12,551	19,477
受取利息・配当金 Interest and Dividend Income	1,731	1,674	2,969	1,825	1,928
合計 Total	5,876	16,044	40,726	14,376	21,405
支払利息・割引料 Interest Expense	5,400	5,230	4,898	4,973	4,014
インテレスト・カバレッジ Interest Coverage (倍 / Times)	1.09	3.07	8.31	2.89	5.33



	96/3	97/3	98/3	99/3	2000/3
総資産回転率 Asset Turnover (回 / Times)	0.86	0.93	0.97	0.86	0.81
棚卸資産回転月数 Inventory Turnover (月 / Months)	4.21	3.54	3.60	2.97	3.43

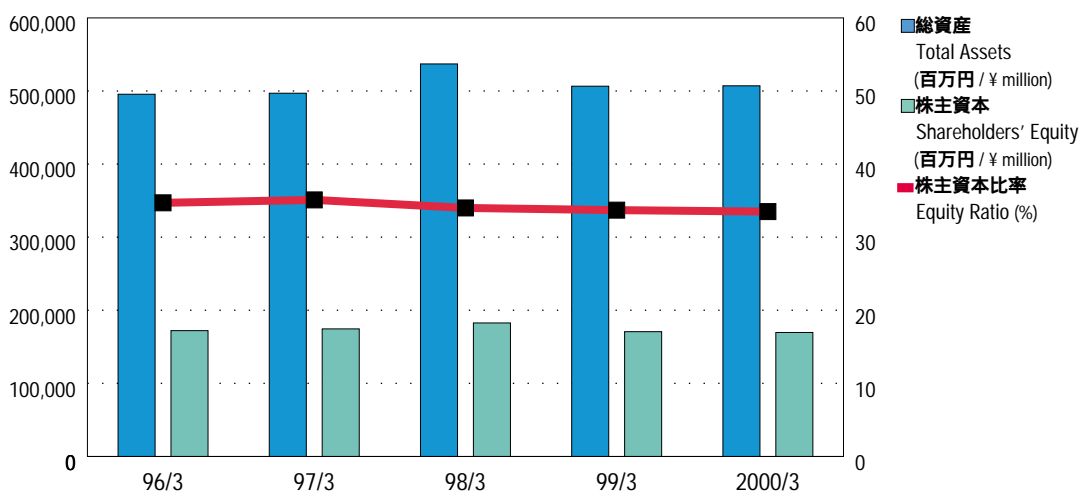
(倍 / Times; 月 / Months)



	96/3	97/3	98/3	99/3	2000/3
総資産 Total Assets (百万円 / ¥ million)	495,563	496,947	537,013	506,566	507,105
株主資本 Shareholders' Equity (百万円 / ¥ million)	172,127	174,528	182,657	170,721	169,634
株主資本比率 Equity Ratio (%)	34.7	35.1	34.0	33.7	33.5

(百万円 / ¥ million)

(%)



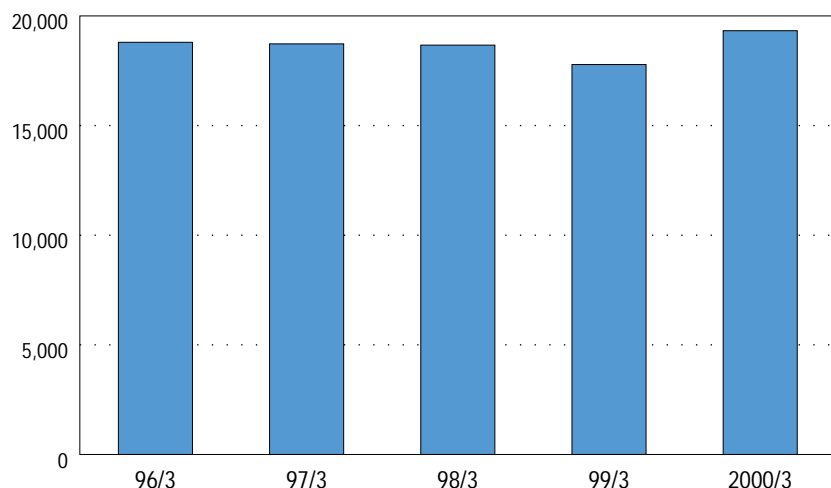
	96/3	97/3	98/3	99/3	2000/3
<b>期末従業員数(人)* Employees at the End of the Term</b>	18,797	18,725	18,668	17,783	19,325**
<b>(単体ベース Non-consolidated)</b>	4,201	4,161	3,644	3,650	3,456)

\*決算期の異なる子会社各社の会計年度末日ベース

Based on the fiscal year-end figures for all companies regardless of settlement period

\*\*前期比増員1,542人の内、LCDの増産等に伴う海外生産拠点におけるワーカーの増員が1,918人であり、グループスタッフ総員では431人の減員となっております。

The 1,542-employee increase during fiscal 2000 included 1,918 workers at overseas production bases to increase LCD output; Group staff declined by 431 employees.



## 8) 株式状況 Stock Information

	96/3	97/3	98/3	99/3	2000/3
<b>発行済株式総数 Shares Issued (千株 / Thousand)</b>	276,158	278,612	278,635	272,025	271,579
<b>潜在株式数 Potential Dilution (千株 / Thousand)</b>	62,231	25,787	15,972	15,949	15,849
<b>潜在株比率 Potential Dilution Ratio (%)</b>	22.5	9.3	5.7	5.9	5.8
<b>外国人持株数 Foreign-owned (千株 / Thousand)</b>	21,946	17,280	17,818	23,191	36,731
<b>外国人株主持株比率 Foreign Ownership (%)</b>	7.9	6.2	6.4	8.5	13.5

