

Profile

To Our Stakeholders

Casio's Strength

Special Features

Financial Highlights

Management  
Foundation

Financial Section

Corporate Data

## Corporate Data

(As of March 31, 2015)

- Established:** June 1957
- Paid-in Capital:** ¥48,592 million
- Employees:** 11,592
- Home Page Address:** <http://world.casio.com/>

### Domestic Offices

#### Head Office

6-2, Hon-machi 1-chome,  
Shibuya-ku, Tokyo 151-8543

#### IR Department

Tel: (03) 5334-4803

### R&D Centers

#### Hamura Research & Development Center

2-1, Sakae-cho 3-chome  
Hamura City, Tokyo 205-8555  
Tel: (042) 579-7111

#### Hachioji Research & Development Center

2951-5, Ishikawa-cho,  
Hachioji City, Tokyo 192-8556  
Tel: (042) 639-5111

### Overseas Offices

#### Casio America, Inc.

570 Mt. Pleasant Avenue,  
Dover, New Jersey 07801,  
United States  
Tel: 973-361-5400

#### Casio Europe GmbH

Casio-Platz 1 22848  
Norderstedt, F.R. Germany  
Tel: 040-528-65-0

## Investor Information

(As of March 31, 2015)

### Stock Exchange Listings

Tokyo

### Transfer Agent

Sumitomo Mitsui Trust Bank, Limited

### Number of Shares

Authorized: 471,693,000 shares  
Issued: 269,020,914 shares

### Number of Shareholders

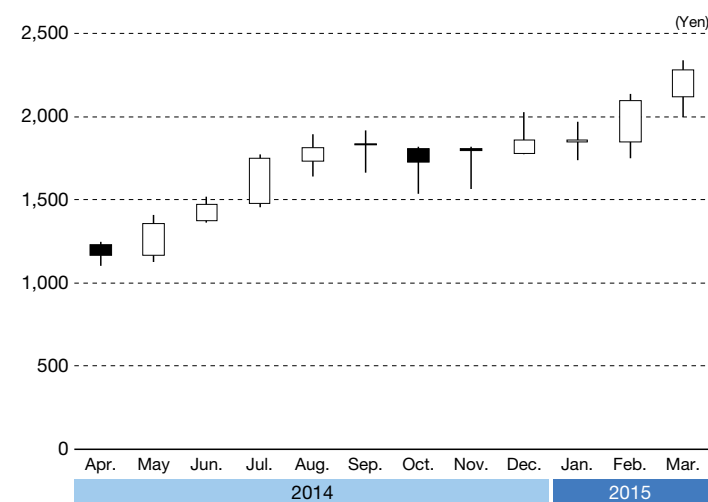
37,540

### Principal Shareholders

	Shareholdings (Thousands of shares)	Outstanding shares (%)
The Master Trust Bank of Japan, Ltd. (Trust Account)	21,544	8.24
Japan Trustee Services Bank, Ltd. (Trust Account)	15,392	5.89
Japan Trustee Services Bank, Ltd. (Sumitomo Mitsui Trust Bank, Limited ReTrust Portion/Sumitomo Mitsui Banking Corp. Pension Trust Account)	13,365	5.11
Nippon Life Insurance Company	12,985	4.97
Casio Bros. Corp.	10,000	3.83
Sumitomo Mitsui Banking Corp.	6,821	2.61
BNY GCM CLIENT ACCOUNT JPRD AC ISG (FE-AC)	4,611	1.76
JP MORGAN CHASE BANK 385078	4,425	1.69
The Bank of Tokyo-Mitsubishi UFJ, Ltd.	4,097	1.57
Trust & Custody Services Bank, Ltd. (Securities Investment Trust Account)	3,842	1.47

Notes: 1. Outstanding shares are calculated after deduction of treasury shares (7,682,689).  
2. Sumitomo Mitsui Trust Bank, Limited reserves the right to exercise the voting rights for 6,365 thousand of the shares held by Japan Trustee Services Bank, Ltd. (shares re-trusted by Sumitomo Mitsui Trust Bank, Limited; Sumitomo Mitsui Trust Bank, Limited Retirement Benefits Account)

### Share Price



### Breakdown of Shareholders

